



NINGBO KASSICO INDUSTRY TECHNOLOGY CO., LTD.

- Address: No.996 Changxing Road, Qianyang Economic Dev. Zone, JiangBei, Ningbo, China
- Mobile: +86 574-8766 4116
- Email: sales@kassico-glamping.com
- Website: <https://www.kassico-glamping.com>



CATALOGUE 2024

LUXURY GLAMPING TENT



TENT CATALOG

TENT CATALOG

INFLATABLE TENT 01 / 16

CANVAS COTTON 17 / 28

DOME CAMPING 29 / 36

TUNNEL TENT 37 / 42

TARP AND CANOPYA 43 / 52

ENJOY YOUR CAMPING

Your Best Inflatable Tent Manufacturer in China

INFLATABLE TENT



INFLATABLE TENT

AUTOMATIC SETUP, LIGHTWEIGHT, LARGE SPACE, VENTILATION



PVC inflatable tube

Free inflatable pump, Free Repair Kits



Vent holes

Humanized vents. The vent design is more conducive to air circulation



Multi-faceted mesh

Anti-mosquito and insect-proof summer ventilation is not stuffy



6.3/12m² House Style Air Inflatable Camping Tent

- Products Mode: KSC-GT2002
- Material: 420D Oxford Cloth PU3000mm, or 210g Cotton Canvas PU500mm
- Floor : 420D Oxford PU3000mm, or 500gsm PVC PU5000mm
- Pole: PVC Air Column with Mesh Cloth
- Open Size: 300*210*200cm/400*300*200cm
- Color: Beige, Khaki, Black, Army Green, Customized
- Logo: Customized

Information Reference



Durable & Breathable Fabric



Large Space



5 minutes Setup



Waterproof and UV Proof



Multi-faceted Ventilation



Chimney Design



INFLATABLE TENT

HOUSE TYPE , LARGE SPACE, AUTOMATIC SETUP, LIGHTWEIGHT



Large interior space

Can accommodat more than one person , Placed inflatable beds coffee table



Vent holes

Humanized vents. The vent design is more couducive to air circulatio



Multi-faceted mesh

Anti-mosquito and insect-proof summer ventilation is not stuffy



13m² House Type Inflatable Camping Tent

- Products Mode: KSC-GT2004
- Material: 420D/600D Oxford Cloth PU3000mm, or 210g Cotton
- Canvas PU500mm,
- Floor Fabric: 500gsm PVC PU5000mm
- Air column: PVC with Mesh Cloth
- Open Size: 360*360*220cm
- Color: Beige, Khaki, Black, Army Green, Customized
- Logo: Customized

Information Reference



Durable & Breathable Fabric



Large Space



5 minutes Setup



Waterproof and UV Proof



Multi-faceted Ventilation



Chimney Design



INFLATABLE TENT

HOUSE TYPE , LARGE SPACE, AUTOMATIC SETUP, LIGHTWEIGHT



17.2m² Air Blow Up Tent For Campsites, Resors & Hotels

- Products Mode: KSC-GT2014
- Out Fabric: 600D or 900D Oxford Cloth PU5000mm
- Floor Fabric: PVC with Mesh Cloth PU5000mm
- Air column: PVC with Mesh cloth
- Open Size: 480*360*220cm
- Color: Beige, Khaki, Black, Army Green, Customized
- Logo: Customized

Information Reference



Durable & Breathable Fabric



Large Space



5 minutes Setup



Waterproof and UV Proof



Multi-faceted Ventilation

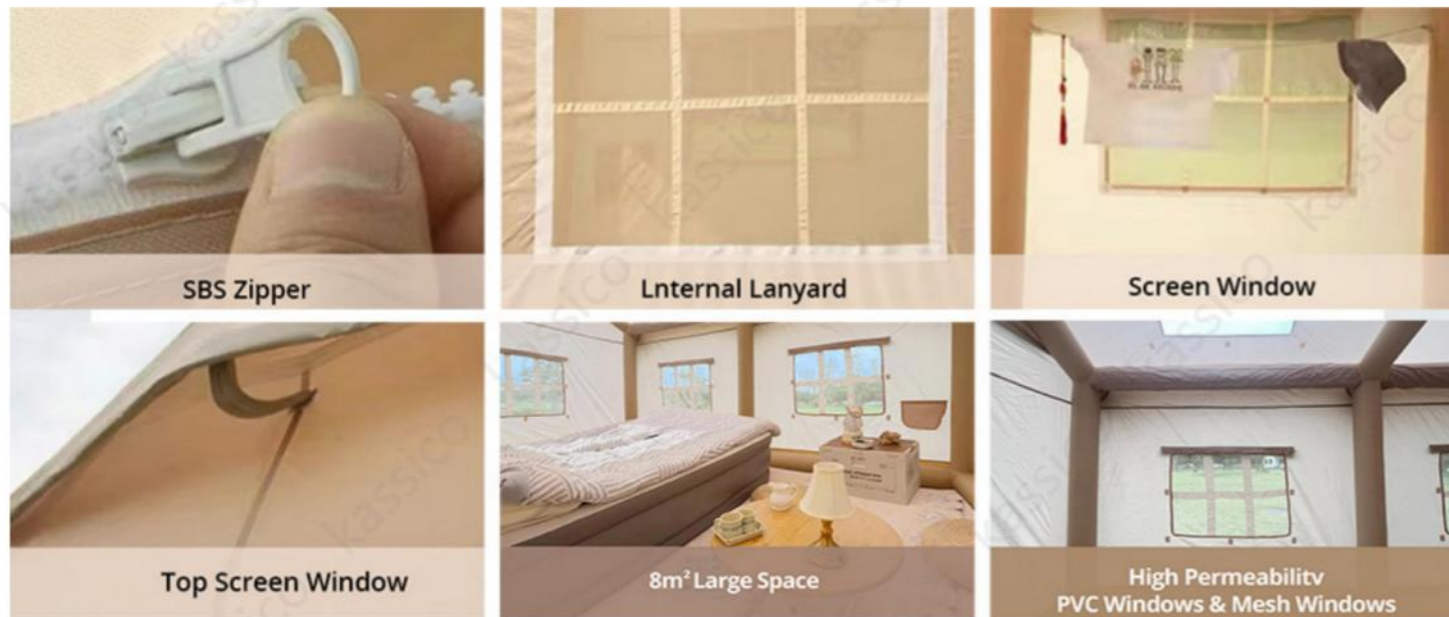


Chimney Design



INFLATABLE TENT

HOUSE TYPE , LARGE SPACE, AUTOMATIC SETUP, LIGHTWEIGHT



8.4m² + 3.6m² Automatic Setup Air Inflatable Tent

- Products Mode: KSC-GT2009
- Fabric: 280g Cotton cotton PU1000mm, or 600D Oxford PU3000mm
- Floor: 500gsm PVC PU5000mm
- Air column: PVC With Mesh Cloth
- Pole Material: Aluminum alloy
- Size: 350*240*240cm (tent), 300*120 (tarp)
- Color: Beige, Khaki, Black, Army Green, Customized
- Logo: Customized

Information Reference



Durable & Breathable Fabric



Large Space



5 minutes Setup



Waterproof and UV Proof



Multi-faceted Ventilation



Chimney Design



INFLATABLE TENT

LARGE SPACE, AUTOMATIC SETUP, LIGHTWEIGHT



INFLATABLE TENT

4.5M Spherical Inflatable Camping Tent

- Products Mode: KSC-GT2027
- Flysheet Fabric: 600D Oxford Cloth PU5000mm
- Floor Fabric: 500g PVC PU5000mm
- Size: 450*450*245cm
- Pole: PVC air column With Mesh Cloth
- Color: Beige, Army Green, Black, Customized
- Logo: Customized

Information Reference



Durable & Breathable Fabric



Large Space



5 minutes Setup



Waterproof and UV Proof



Multi-faceted Ventilation



Chimney Design

INFLATABLE TENT

6.3/12m² Air Inflatable Camp Tent

- Products Mode: KSC-GT2002-2
- Out Fabric: 420D Oxford PU3000mm
- Floor Fabric: 420D Oxford PU3000mm
- Air column: PVC with with Mesh
- Open Size: 300*210*200cm/400*300*200cm



9m² Automatic Setup Blow Up Tents

- Products Mode: KSC-GT2012-2
- Out Fabric: 420D Oxford PU3000mm
- Floor Fabric: 420D Oxford PU3000mm
- Air column: PVC with with Mesh
- Open Size: 360*250*230cm



9m² Thicked Air Inflatable Glamping Tent

- Products Mode: KSC-GT2012
- Out Fabric: 420D Oxford PU3000mm
- Floor Fabric: 420D Oxford PU3000mm
- Air column: PVC with with Mesh
- Open Size: 300*300*215cm



Waterproof Blow Up Camping Tent

- Products Mode: KSC-GT2015
- Out Fabric: 420D Oxford PU3000mm
- Floor Fabric: 420D Oxford PU3000mm
- Air column: PVC with Mesh Cloth
- Open Size: 420*300*255cm



INFLATABLE TENT

12m² Two Rooms Inflatable Tent



- Products Mode: KSC-GT2021
- Out Fabric: 420D Oxford PU3000mm
- Floor Fabric: 420D Oxford PU3000mm
- Air column: PVC with mesh cloth
- Open Size: 400*300*230cm



SUVs Car Rear Camping Blow up Tent



- Products Mode: KSC-GT2021
- Size: 440*250*190 cm
- Out Fabric: 420D Oxford PU3000mm. or
- 210gCotton Canvas PU500mm,
- Floor Fabric: 420D Oxford PU3000mm
- Air Column: PVC Air Column with Mesh Cloth



Multiple-Rooms Inflatable Glamping Tent



- Products Mode: KSC-GT2016
- Material: 600 or 900D Oxford Cloth PU5000mm
- Floor Fabric: 500gsm PVC PU5000mm
- Air column: PVC With Mesh Cloth
- Open Size: L380+250*W360*H220cm,
L380++240+250*W360*H220cm



Air Inflatable Car Rear Tent



- Products Mode: KSC-GT2023
- Outer Fabric: 150D Oxford Silver Coating PU3000mm
- Inner Fabric: 150D Oxford PU3000mm
- Floor Fabric: 210D Oxford Cloth
- Pole: PVC air column with mesh cloth
- Opening Size: 515*340*215cm



ENJOY YOUR CAMPING

Your Best Glamping Tent Manufacturer in China

CANVAS COTTON/ OXFORD TENT



3M-6M Luxury Glamping Bell Tent

- Products Mode: KSC-GT1012
- Out Fabric: 280g Cotton Canvas PU500-1000mm, or 900D Oxford Cloth PU5000mm
- Bottom Fabric: 500gsm PVC PU5000mm
- Open Size: 300*300*200/400*400*250/500*500*300/600*600*350cm
- Capacity: 2/5/8/12 person
- Poles: Φ 38mm 1.5mm main pole, ϕ 19mm 1.0mm door pole



Door & Window Mesh



Large Space

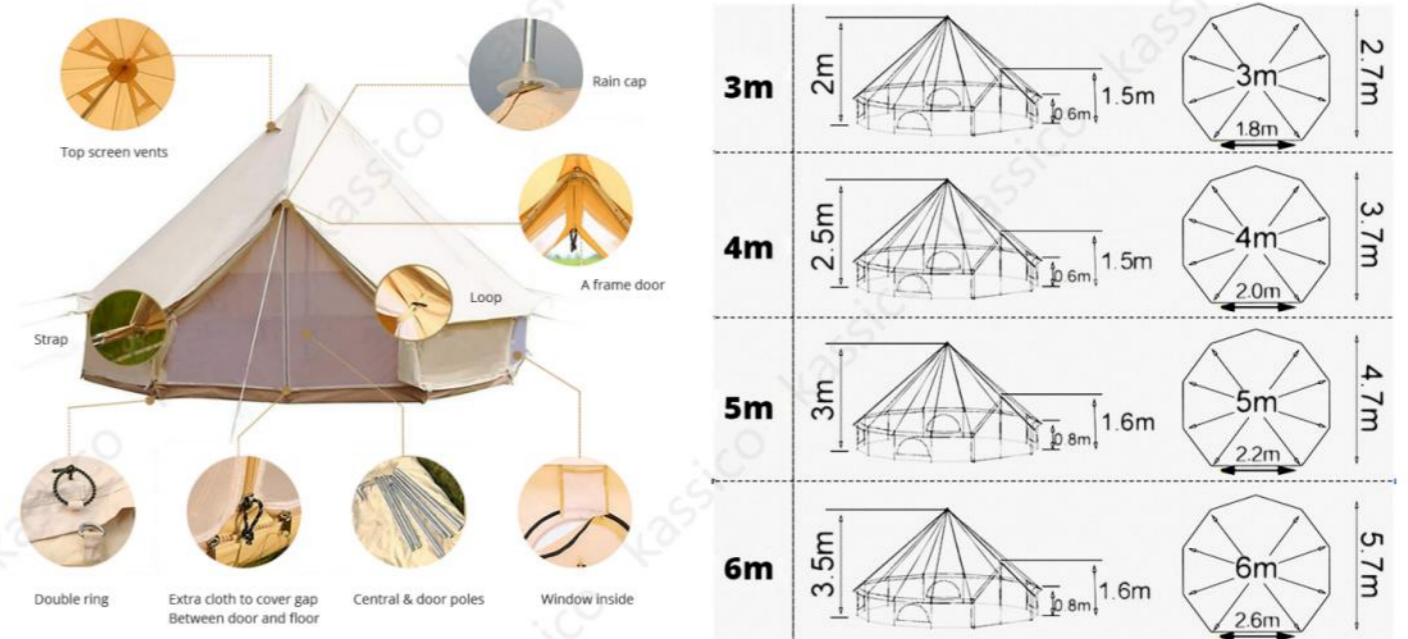


Zippers



 Mould-proof	 Anti-UV	 Easy take-in	 Breathable
 Rain-proof	 Anti-mosquito	 Large space	 Firm

Information Reference





INDIAN PYRAMID CAMPING TENT



Indian Pyramid Camping Tent

- Products Mode: KSC-GT1004C
- Outer Fabric: 280g Cotton Canvas PU1000mm, or 900D Oxford Cloth PU5000mm
- Inner Fabric: B3 mesh
- Ground: 500gsm PVC PU5000mm
- Open Size: 414*414*280cm/548*548*350cm
- Pole: 1*Φ38 1.5mm Galvanized Steel Poles and 1*Φ19 door pole

Information Reference



convenient to receive



waterproof



portable build



grenadine design



breathable comfortable



Repelled by sun

EMPEROR BELL TENT

Big space, Doors and windows, Greater stability
Breathable, Rainproof, Viewable



6x4m Emperor Bell Tent



- Products Mode: KSC-GT1014
- Material: 280g Cotton Canvas PU1000mm, or 900D Oxford Cloth PU5000mm
- Floor Fabric: 500gsm PVC PU5000mm
- Open Size: 600*400*300cm/24
- Wind rope: ϕ 6mm 3.1M *13 and 3.7M*3
- Poles: 1* ϕ 38 1.5mm Main Pole, 1* ϕ 19 1.0mm door pole



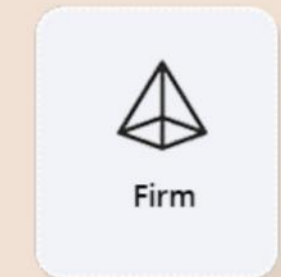
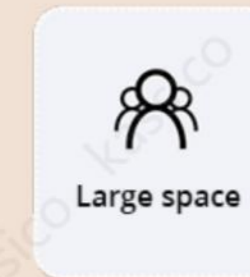
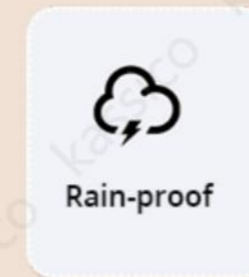
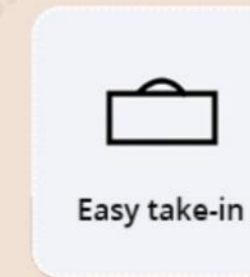
Greater stability



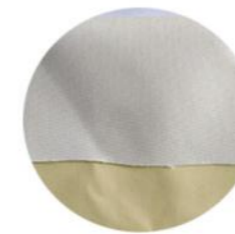
Large space



Doors and windows mesh



Information Reference



900D Oxford

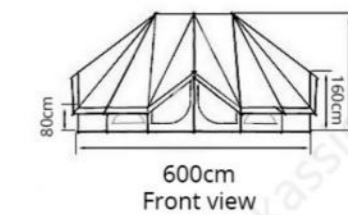
Color: Off white
Raw Material: Oxford
Texture: Surface roughness
Feature:
(1) Waterproof
(2) Warmth
(3) Windproof
(4) Mildew resistance(Moderate)
(5) Fireproof



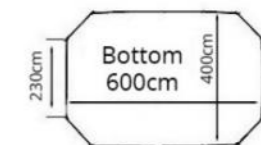
280g Cotton

Color: Khaki
Raw Material: Cotton
Texture: Surface fine and smooth
Feature:
(1) Waterproof
(2) Warmth
(3) Windproof
(4) Mildew resistance(Good)

Floor Fabric: They are all 500g PVC, Flame retardant, Waterproof



Three doors Same size





YURT CIRCUS TENT

DOUBLE LAYER, LARGE SPACE

Double Layer Circus Yurt Glamping Tent

- Products Mode: KSC-GT1018
- Outer Fabric: 210g Cotton Canvas PU500-1000mm
- Wall Fabric: 150D Oxford PU2000mm
- Bottom Fabric: 600D Oxford PU5000mm
- Open Size: 450*450*280cm
- Pole: 2.8m*1 Pole: ϕ 32mm*1.2mm, 1.4m*8 poles: ϕ 19*0.8mm



4-6M Dia. Round Waterdrop Stargazing Bell Tent

- Products Mode: KSC-GT1019
- Outer Fabric: 280g Cotton Canvas PU1000mm or 900D Oxford Cloth PU3000mm
- Bottom Fabric: 500gsm PVC PU7000mm
- Open Size: 400*400*285cm/500*500*315cm/600*600*350cm
- Pole: ϕ 38 1.5mm Galvanized Steel Poles and ϕ 12 fiberglass poles



Touareg Bell Tent

- Products Mode: KSC-GT1016
- Outer Fabric: 280g Cotton Canvas PU1000mm, or 900 Oxford Cloth PU5000mm
- Bottom Fabric: 540gsm PVC PU5000mm
- Open Size: 440*300*240cm/500*400*300cm
- Wind Rope: 10* ϕ 6mm 3.7M and 10*1.5M
- Poles: 1* ϕ 38 1.5mm Iron Pole, 4* ϕ 19mm 1.0mm Door Pole, 4 * side poles



PYRAMID CAMPING TENT

TEEPEE & PYRAMID

NEW



Tipi Camping Tent

- Products Mode: KSC-GT1002
- Material: 280g Cotton Canvas PU500mm, or 900D Oxford Cloth PU5000mm
- Ground: 500gsm PVC PU5000mm
- Size: 300X300X250/400X400X300/500X500X350CM
- Pole: \varnothing 38mm 1.5mm iron poles



Pyramid Camping Tent With Shelter

- Products Mode: KSC-GT1004C
- Outer Fabric: 150D Oxford PU2000MM
- Inner Fabric: B3 mesh
- Ground: 150D Oxford PU2000MM
- Open Size: 450*450*300cm
- Pole: Steel Pipe



Pyramid Camping Tent With Shelter

- Products Mode: KSC-GT1004S
- Outer Fabric: 210D Oxford PU2000MM
- Inner Fabric: B3 mesh
- Ground: 210D Oxford PU2000MM
- Open Size: 240*240*210cm
- Pole: Aluminum Poles



Double Layer Camping Teepee Tent

- Products Mode: KSC-GT1006
- Outer Fabric: 210g Cotton Canvas PU500mm, or 210D Oxford Cloth PU3000mm
- Inner Fabric: 210D Oxford PU3000mm
- Open Size: 300X240X210CM
- Pole: Retractable Aluminum Poles



DOUBLE LAYER CAMPING TENT



8/13 Two Rooms Family Camping Tents

- Products Mode: KSC-GT1032
- Out: 210D Oxford Cloth With Silver Coating PU3000mm
- Inner Fabric: 190T Polyester
- Bottom Fabric: 300D Oxford PU3000mm
- Size (8/13): 330*230*180cm/400*280*190cm
- Poles: Aluminum



HOUSE CABIN CAMPING TENT

NEW



Double Layer House Type Camping Tent

- Products Mode: KSC-GT1006
- Fabric: 210g Cotton Canvas, or 600D Oxford Cloth PU3000mm
- Ground: 500g PVC with mesh cloth PU5000mm
- Open Size: 400*300*230cm
- Poles: Crossbar & slanting pole, side poles
- Accessories: Pegs,ropes,carry bag



Cabin Spring Bar Camping Tent

- Products Mode: KSC-GT1030
- Size: 300*300*200cm、420*300*200cm, 600D Oxford Cloth PU3000mm
- Groundsheet: 500g PVC
- Pole Material: \varnothing 25mm 1.2mm mail pole, \varnothing 20mm 1.0mm side poles

Wall Camping Tent

- KSC-GT1034
- Outside Fabric: 280g Cotton Canvas PU1000mm, or 900D Oxford Cloth PU5000mm
- Groundsheet: 500gsm PVC PU5000mm
- Open Size: 206*210*105cm/320*300*200cm
- Pole Material: Φ 25mmx1.2m U-tube
- Accessories: Stakes, Ropes, carry bag



ENJOY YOUR CAMPNG

Your Best Glamping Tent Manufacturer in China

DOME CAMPING





DOMES CAMPING TENT

Ultralight Scalable Dome Camping Tent



INFLATABLE TENT

Ultralight Scalable Dome Camping Tent

- Products Mode: KSC-GT5022
- Flysheet Fabric: 40D Nylon rip-stop, PU3000mm, Seam Taped
- Inner: B3 mesh+40D nylon
- Floor Fabric: 40D Nylon PU3000
- Size: M: 350*300*170CM/ L: 465x380x220cm
- Pole: 7001 Aluminum

Information Reference



convenient to receive



waterproof



portable build



grenadine design



breathable comfortable



Repelled by sun



DOMES CAMPING TENT

Waterproof Sphere Dome Camping Tent With Double-layer



**Breathable
Gauze curtain**



**Transparent
TPU**



**Oxford
Cloth**



INFLATABLE TENT

Sphere Dome Camping Tent With Double-layer

- Products Mode: KSC-GT1028
- Flysheet Fabric: 600D/900D Oxford Cloth PU5000mm
- Floor Fabric: 500gsm PVC PU5000mm
- Size: 450*450*225cm
- Pole: φ19mm 1.0mm poles,set alu poles

Information Reference



convenient to receive



waterproof



portable build



grenadine design



breathable comfortable



Repelled by sun



DOME TENT

ACCESSORIES

POP UP DOME TENT



Automatic Pop Up Dome Camping Tent

- Products Mode: KSC-GT5030
- Flysheet Fabric: 210D Oxford Cloth PU2000mm
- Floor Fabric: 210D Oxford Cloth PU2000mm
- Size: 300*300*200cm
- Pole: Fiberglass



DOME TENT

DOME CAMPING TENT



Automatic Instant Dome Camping Tents

- Products Mode:
- Flysheet Fabric: 70D nylon Ripstop Silicone with PU3000 coating
- Floor Fabric: 70D Nylon with PU3000 coating
- Size: 510*220*223cm
- Pole: Aluminum



ENJOY YOUR CAMPING

Your Best Tunnel Tent Manufacturer in China

TUNNEL TENT



TUNNEL FAMILY CAMPING TENT



Army Green Camping Tunnel Tent

- Products Mode: KSC-GT4016
- Outer Fabric: 210T Polyester fabric with PU 3000mm coating
- Inner Fabric: 68D polyester PU3000
- Open Size: 400*500*220cm
- Pole: 7 series Aluminum alloy



DOUBLE LAYER TUNNEL TENT



Double Layer Luxury Glamping Tunnel Tent

- Products Mode: KSC-GT4014
- Outer Fabric: 210D Oxford PU3000
- Inner Fabric: 68D polyester PU3000
- Floor: 210D Oxford PU3000
- Open Size: 585*320*205cm
- Pole: Aluminum alloy





LARGE LUXURY TUNNEL TENT



Multi-rooms Tunnel Camping Tents

- Products Mode: KSC-GT4015
- Material: 190T Polyester fabric with PU 2000-3000mm coated
- Floor: 210D Oxford PU2000-3000mm
- Size: 620*330*210cm
- Pole: Fiberglass



FAMILY CAMPING TUNNEL TENT



Multi-rooms Tunnel Camping Tents

- Products Mode: KSC-GT4016
- Material: 190T Polyester fabric with PU 3000mm coated
- Floor: 210D Oxford PU3000mm
- Size: 530*390*205m
- Pole: Fiberglass



ENJOY YOUR CAMPING

Your Best Tunnel Tent Manufacturer in China

TARP AND CANOPY

TARP AND CANOPY



TARP AND CANOPY



3 Peaks Campsite Star Shade Tents

- Products Mode: KSC-GT6020-3
- Outer Fabric: 600D/900D Oxford
- Open Size: 20*8.6*4M(172M²)
- Pole: 1pc 4m Steel Pipe d38mm, 2pcs d38mm*3.6m



NEW



Single Peak Awing Tents

- Products Mode: KSC-GT6020-1
- Outer Fabric: 600D/900D Oxford
- Open Size: 6*6*3.5M, 10*10*4M
- Pole: M: Steel Pipe d38mm*3.5M
L: SS wood texture pole d52mm*4M

Double Peaks Campground Tent

- Products Mode: KSC-GT6020-2
- Outer Fabric: 600D/900D Oxford Fabric or 280g Polyester cotton
- Open Size: 15*8.3*4M
- Pole: SS wood texture pole d52mm*4M



TARP AND CANOPY



TARP AND CANOPY



15M 2 Peaks Camping Canopy Tent

- Products Mode: KSC-GT6020-2A
- Outer Fabric: 600D/900D Oxford Cloth PU5000mm
- Open Size: 15*8.8*4M
- Pole: 1pc 4m Steel Pipe d38mm, 2pcs d38mm*3.6m



NEW



3 Peaks Lotus Awing Tent

- Products Mode: KSC-GT6028
- Outer Fabric: 600D/900D Oxford
- Open Size: 13*8.8*4.5M
- Pole: 1pc 4m Steel Pipe d38mm, 2pcs d38mm*3.6m

Outdoor Camping Sun Shelter

- Products Mode: KSC-GT6024
- Fabric: 600D/900D Oxford Cloth
- Pole: 52mm*1.1MMT wood grain color stainless steel tube
- Size: 600*1000*400cm





CANOPY TENT



Sunscreen Camping Site Canopy

- Products Mode: KSC-GT6016
- Material: 600D/900D Oxford Cloth PU5000mm
- Size: 4.5*4.8*2.8M
- Pole: ϕ 38mm 1.5mm Steel poles, ϕ 16mm 7071 alu poles



CANOPY TENT



Outdoor Camping Dome Canopy

- Products Mode: KSC-GT6019
- Size: 4.5*4.8*2.8M
- Fabric: 600D/900D Oxford Cloth
- Poles: ϕ 38mm 1.5mm Steel poles, ϕ 16mm 7071 alu poles





CANOPY TENT



18-60m² Camping Awning

- Products Mode: KSC-GT6014
- Material: 600D/900D Oxford Cloth , or 280g Cotton Canvas PU1000mm,
- Size: M: 540*340*250cm(18m²), L: 1000*600*280cm(60m²)
- Pole: Steel poles



CANOPY WINDSCREEN



Foldable Camping Windscreen

- Products Mode: KSC-GT7002
- Material: 420D Oxford Cloth PU2000-3000mm
- Pole: Steel and fiberglass
- Size: 560*140cm

